

# Horizon



# The Last Frontier



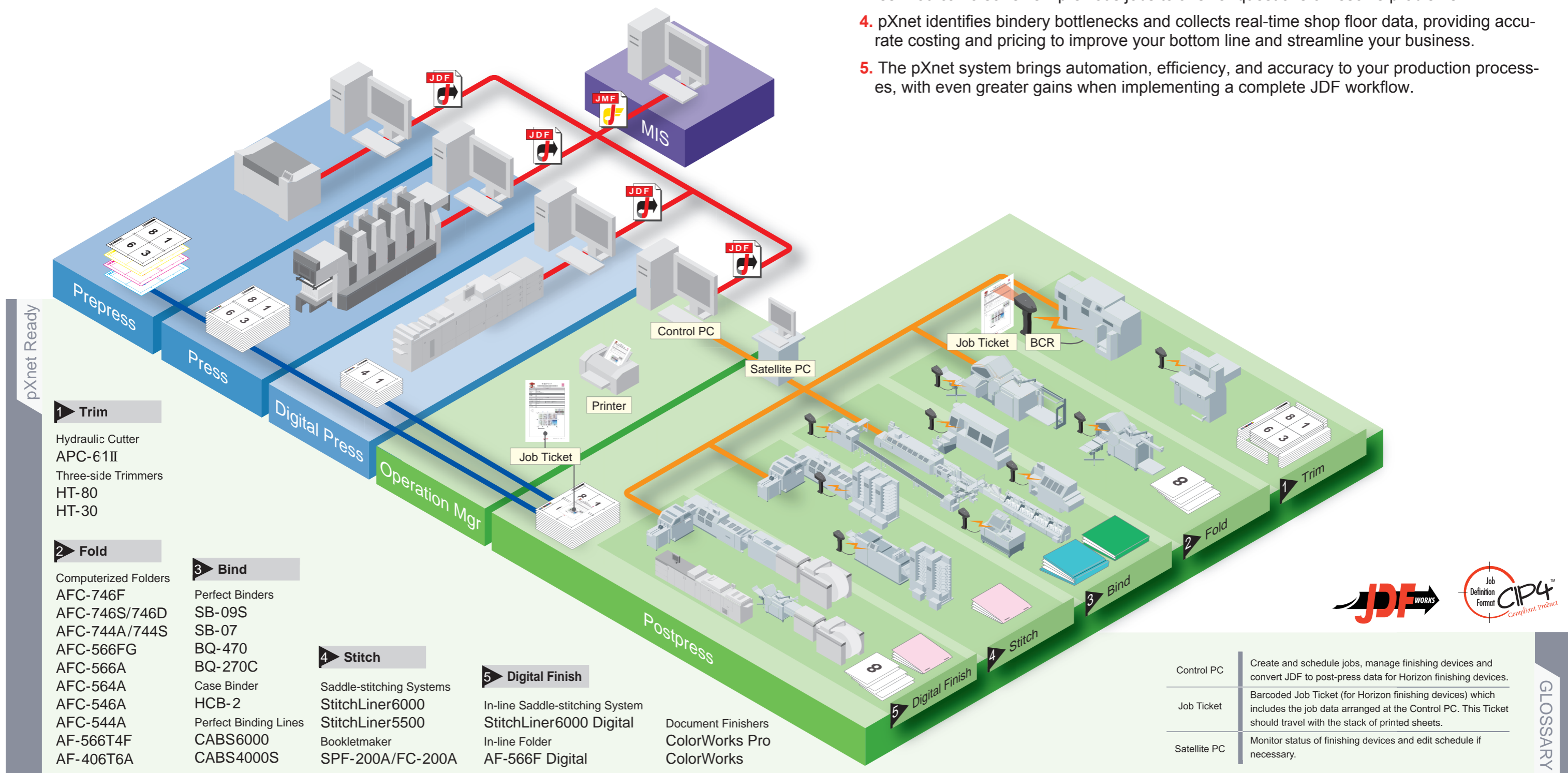


The Horizon pXnet Bindery Control System is used as a central control point to schedule work, send job data to each finisher, monitor status of finishers and collect production statistics from finishers in real-time. pXnet brings efficiency and value in high-mix/low-volume production environments where frequent job changeovers are needed.

The pXnet system can also be interfaced with an existing workflow for automated JDF set-up.

**Benefits from implementing Horizon pXnet**

1. Bindery managers will see work-in-progress in real-time, to make informed decisions on scheduling, staff planning, and equipment utilization. When pXnet is integrated upstream, this data is also visible to customer service, estimating, production planning, and management.
2. pXnet uses a simple, graphical drag-and-drop system for job planning and scheduling that alerts you to potential missed deadlines, so you can balance the work or schedule additional shifts as needed
3. All jobs are saved within pXnet, so you can easily recall recurring jobs for quick make-readies. You can also review previous jobs to answer questions or resolve problems.
4. pXnet identifies bindery bottlenecks and collects real-time shop floor data, providing accurate costing and pricing to improve your bottom line and streamline your business.
5. The pXnet system brings automation, efficiency, and accuracy to your production processes, with even greater gains when implementing a complete JDF workflow.



- 1 Trim**  
Hydraulic Cutter  
APC-61II  
Three-side Trimmers  
HT-80  
HT-30

- 2 Fold**  
Computerized Folders  
AFC-746F  
AFC-746S/746D  
AFC-744A/744S  
AFC-566FG  
AFC-566A  
AFC-564A  
AFC-546A  
AFC-544A  
AF-566T4F  
AF-406T6A

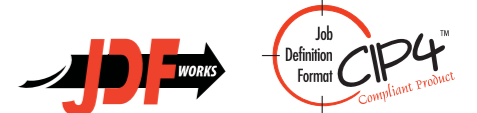
- 3 Bind**  
Perfect Binders  
SB-09S  
SB-07  
BQ-470  
BQ-270C  
Case Binder  
HCB-2  
Perfect Binding Lines  
CABS6000  
CABS4000S

- 4 Stitch**  
Saddle-stitching Systems  
StitchLiner6000  
StitchLiner5500  
Bookletmaker  
SPF-200A/FC-200A

- 5 Digital Finish**  
In-line Saddle-stitching System  
StitchLiner6000 Digital  
In-line Folder  
AF-566F Digital

- Document Finishers  
ColorWorks Pro  
ColorWorks

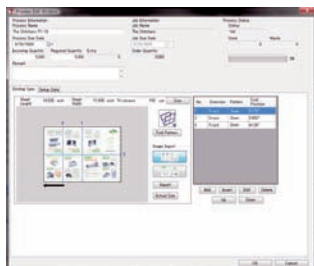
Control PC	Create and schedule jobs, manage finishing devices and convert JDF to post-press data for Horizon finishing devices.
Job Ticket	Barcoded Job Ticket (for Horizon finishing devices) which includes the job data arranged at the Control PC. This Ticket should travel with the stack of printed sheets.
Satellite PC	Monitor status of finishing devices and edit schedule if necessary.



## Advanced Features

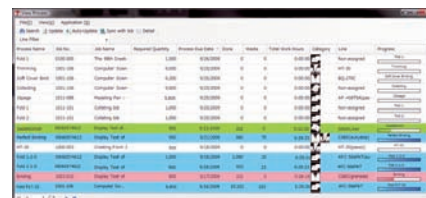
### Easy and simple job Schedule Ticket creation

- Jobs can be created manually or by use of template by simply input the necessary book or sheet size information. A drag-and-drop system simplifies scheduling.
- Input of job creation data is automated when the system is connected to a JDF workflow.
- Any job can be saved as a template for easy recall of recurring or specialized jobs.



### Real time job monitoring

- The Job state of all pXnet-linked machines can be monitored in real time on the PC monitor.
- The screen provides complete status and visibly on work pending, work in progress and work completed.



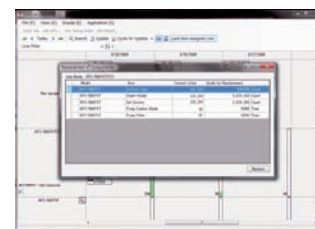
### Job ticket style scheduling

- pXnet lets you easily schedule jobs to specific finishing devices, and lets you know when you need to split production between finishing devices.
- Scheduling equipment by shift or changing shifts are easy to do with the drag and drop operation.
- An Operator ID can be entered to recognize who finished the job and to analyze shift efficiency.



### Error records and maintenance

- The pXnet stores error records that record equipment condition. Error details can be viewed on-screen.
- pXnet can be set up to indicate when wear parts may need checking, maintenance or replacing. It can also be set up to alert the operator when consumables like stitching wire or adhesive may need replenishment.



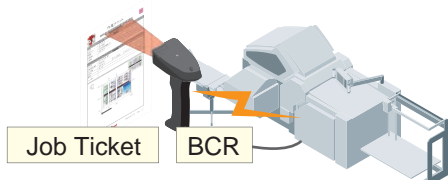
### JDF compatibility

- The pXnet can be enhanced with JDF allowing postpress management or JDF workflow formulation through MIS, prepress, press and postpress.



### Job tickets for easy job setup and operation

- The pXnet System creates a unique ID code for each job and issues a custom barcoded job ticket.
- System sets up instantly by scanning the barcode on the job ticket with the barcode reader which is attached to the finisher.
- The job ticket includes a thumbnail of the actual printed image, indicating cutting order, sheet loading direction and finishing profile for easy set up and operation.



### System Requirements

	Client PC	Data base server
PC	Intel Pentium4 Processor or higher (Core 2 Duo is recommended)	Intel Pentium4 Processor or higher (Core 2 Duo is recommended)
OS	WindowsXP Professional SP3 or higher, Windows Vista	WindowsXP Professional SP3 or higher, Windows Vista Windows Server 2003
Memory	1GB or more (2GB is recommended)	1GB or more (2GB is recommended)
Hard Disk	3GB or more	120GB or more
Media Drive	DVD-ROM drive	DVD-ROM drive
Display	1024x768 or more (1280x1024 is recommended)	



Manufactured by Taiyo Seiki Co., Ltd.

Distributed by

**HORIZON INTERNATIONAL, INC.**

510 Kuze Ooyabu-cho, Minami-ku, Kyoto, 601-8206, Japan Phone : +81-(0)75-934-6700, Fax : +81-(0)75-934+6708, www.horizon.co.jp